

State of Wyoming Corner Record

(In compliance with the CORNER PERPETUATION AND FILING ACT, Wyoming Statutes, 1977, Section 36~11~101, et, seq., and the Rules and Regulations of the Board of Registration for Professional Engineers and Professional Land Surveyors)

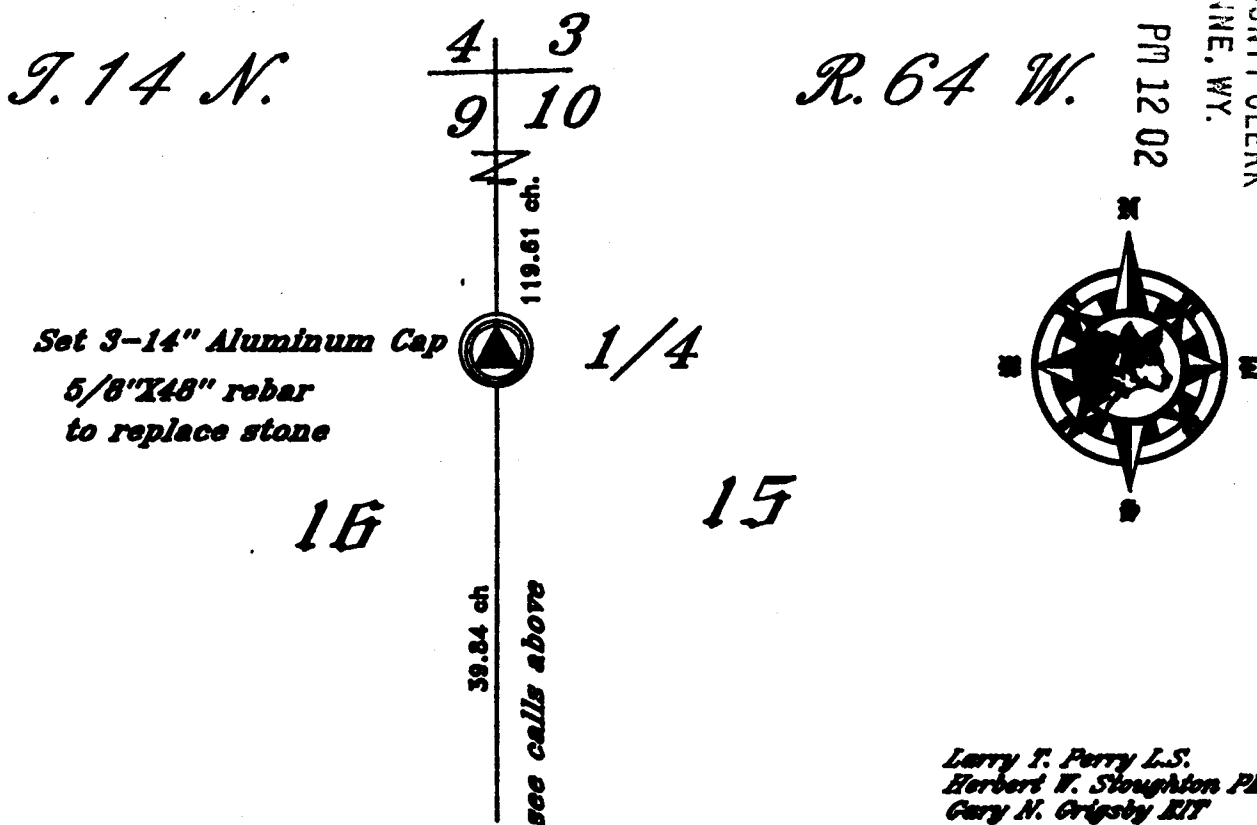
The Reverse side of this form may be used if more space is needed.

The record of the original survey and the citation of the source of historical information (If the corner is lost or obliterated) The description of the corner monumentation evidence as found and/or monument and accessories established to perpetuate the location of this corner. A sketch of the relative location of the monument, accessories, and reference points with course and distance to the adjacent corner(s) (If determined in this survey). The method and rationale for reestablishment of the lost or obliterated corner.

G.L.O.: North between Sec.16 & Sec.15, set Sandstone 17"X9"X8" for 1/4 corner.

Found Sandstone 17"X9"X8", base well set with the top broken in pieces, replaced with 5/8"X48" rebar with 3-1/4" Aluminum Cap.
(Calls from Sec. Corner 15/16/21/22 to 1/4 :

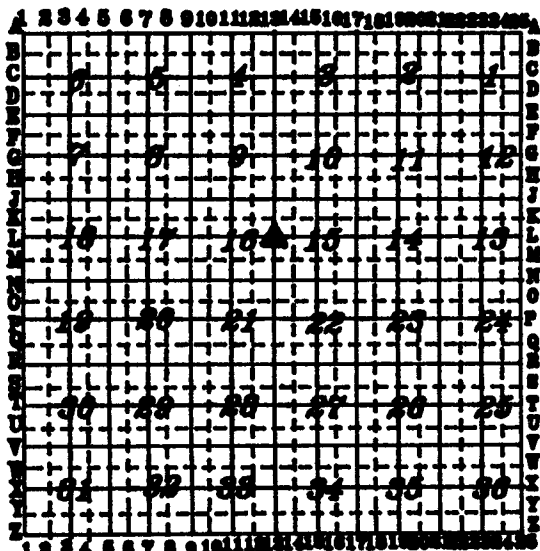
1.45 ch. to trail WSW to ENE. 27.52 ch. to C/L draw, pond lies 4.5 ch. more or less to the East. 80.66 ch to trail E to W. 39.84 ch to 1/4. as described above.



Larry T. Perry L.S.
Herbert W. Sloughton PR&LS
Gary N. Gristby RIT

Date of Field Work: _____ Office Reference: _____

Cross Index Diagram



Terrestrial Surveying & Mapping Co.
1187 Terry Ranch Road Cheyenne, Wyoming 82007

Phone (307) 634-6300
This corner record was prepared by me or under my direct supervision.

Seal and Signature



Corner Name : 1/4 Section: 16/15 T. 14 N. R. 64 W. 66 P.M. Cross Index No. L ~ 13